

... der Kantate Nr. 6 aus dem Weihnachtsoratorium J.

The image displays a musical score for a cantata, consisting of 12 staves of music. The key signature is G major (one sharp) and the time signature is 4/4. The score is written in a single melodic line on a treble clef. The music begins with a rest in the first measure, followed by a series of eighth and quarter notes. The score includes various rhythmic patterns, such as eighth-note runs, quarter-note patterns, and rests. There are also some dynamic markings, such as accents and hairpins. The score is divided into measures, with measure numbers 5, 9, 12, 14, 15, 17, 18, 20, 21, 24, and 27 indicated at the beginning of their respective staves.

2

30



32



33



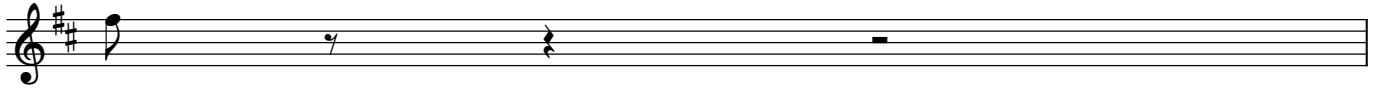
35



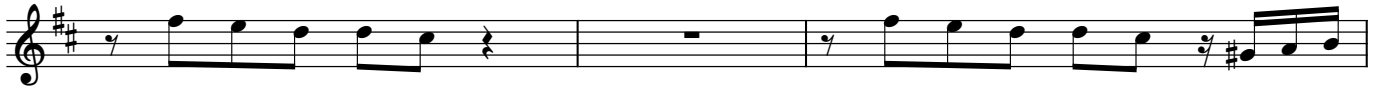
36



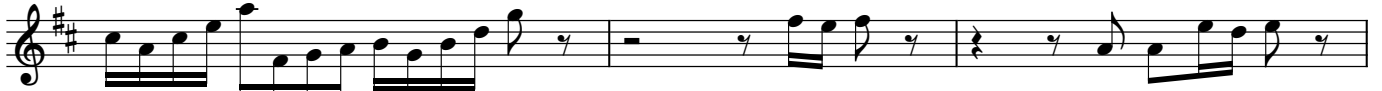
38



39



42



45



48



50



51



54



