

I  $\begin{matrix} 5 \\ 3 \\ 2 \end{matrix}$  ii  $\begin{matrix} 4 \\ 2 \end{matrix}$  V6 I I6 IV vii6 I V  $\begin{matrix} 6 \\ 5 \end{matrix}$  ii  $\sharp$  V  $\sharp$  V6

5

7 ii  $\begin{matrix} 7 \\ \sharp \end{matrix}$  V  $\sharp$  V

6

V  $\begin{matrix} 4 \\ I \\ I \end{matrix}$  3  $\begin{matrix} 7 \\ ii \\ vii6 \end{matrix}$   $\flat$  I6 I  $\sharp$  V IV6 V6 I V6  $\begin{matrix} 7 \\ ii \end{matrix}$   $\sharp$  V  $\sharp$  V6

The image shows a musical score for a piece, likely in G major. It consists of four staves. The first two staves are in treble clef, and the last two are in bass clef. The music features a mix of eighth and sixteenth notes, often beamed together, and some longer note values. A brace is present in the third measure of the bass staves. Below the staves, a series of chord symbols and numbers are aligned with the notes: 7 ii, 7# V, # V, V, 5/4 I, 3 I, 9 ii, 8 ii, 7 I, 6 I6, 6/5 ii, 7# V, I, 6 I6.

7 7# # V 5/4 3 9 8 7 6 6/5 7# 6  
 ii V V I I ii ii I I6 ii V I I6

14

9 8 7 5 6 6 # 5 6  
 IV V vi I6 ii V I vi IV6 vi ii6 V iii6  
 IV vii6 I6

18

5 6 6 4 9 6 5 6 5 9 8 6  
 vi IV6 V I vii vii I I6 V vi6 vii i VI  
 i

21

6 5 6 5 6 5 6 5 6 5 6 6 7 6  
 ii V i i6 iv I IV V vi ii6 V i6  
 ii6 iii6 IV6

25

6 # 9 6 4 6 6 # 6  
 ii V I I6 V V6 ii V V iii ii6 V iii6 I IV6

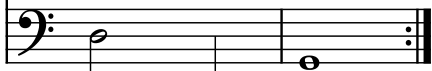
29

6 6 6 6 6 # 6 6 6 6 5 #  
 vii6 V6 I6 vi6 ii6 vii6 iii6 I6 IV6 ii6 V I I6 IV I V

33

5 6 5 6 # 6 5 6 # 6 5 6 6 3 9 8 6  
 I ii iii I6 IV ii6 V iii6 vi V I I6 IV ii6  
 vi6 vii6 IV6 IV

37



7 #  
V  
V

6  
4

5 #  
4  
V  
V

I