

Violin Concerto in E Minor Op.64

Felix Mendelssohn

♩ = 100

7

8

15

17

23

25

29

30

34

35

Detailed description: This image shows the first 35 measures of the Violin Concerto in E Minor, Op. 64 by Felix Mendelssohn. The score is written for a single violin in treble clef with a key signature of one sharp (F#) and a tempo marking of quarter note = 100. The music begins with a half rest followed by a series of eighth and sixteenth notes. Measures 7-8 feature a melodic line with a fermata. Measures 15-17 contain a sequence of eighth notes. Measures 23-25 show a melodic line with a fermata. Measures 25-29 are characterized by a series of triplets. Measures 29-30 continue with triplets and a melodic line. Measures 34-35 feature a sequence of triplets. The score is presented on ten staves, with measure numbers 7, 8, 15, 17, 23, 25, 29, 30, 34, and 35 indicated at the beginning of their respective staves.

81

86

88

93

94

99

100

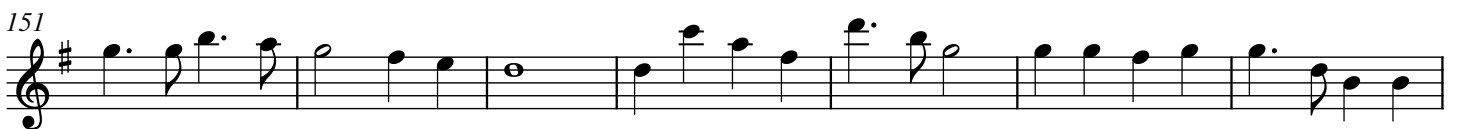
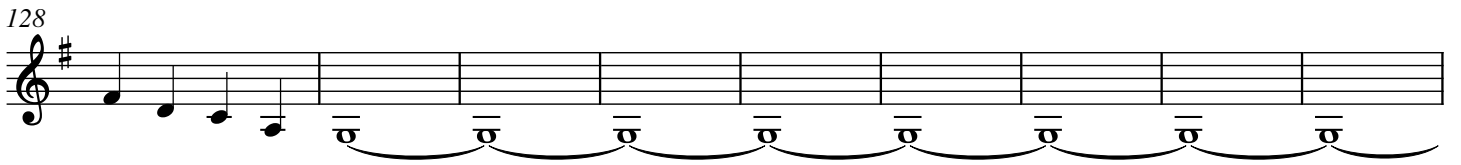
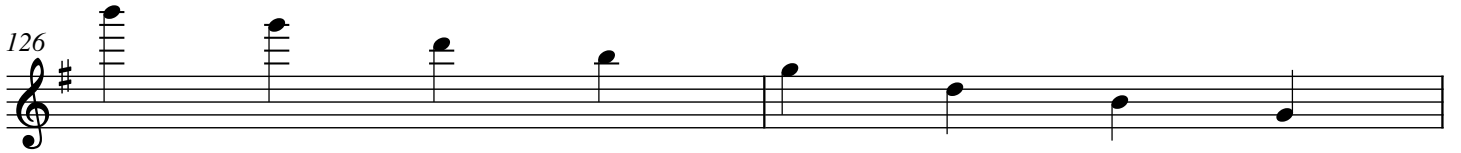
105

108

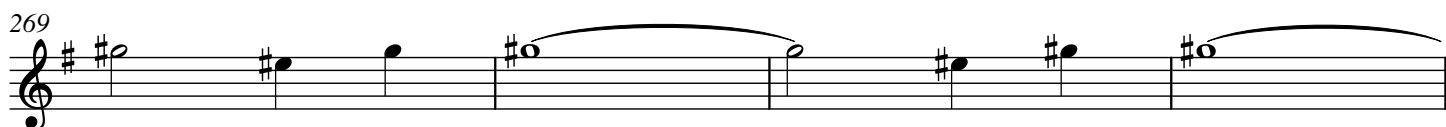
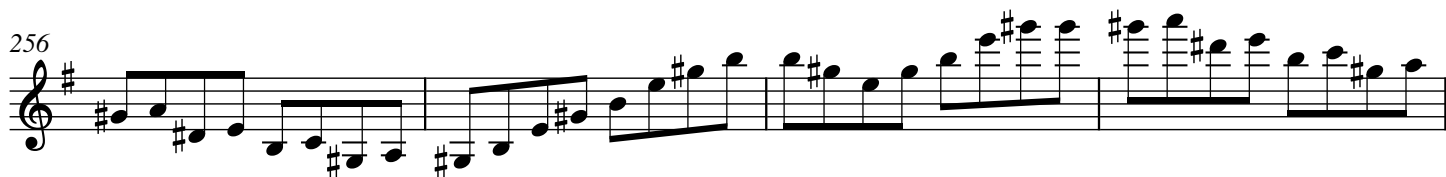
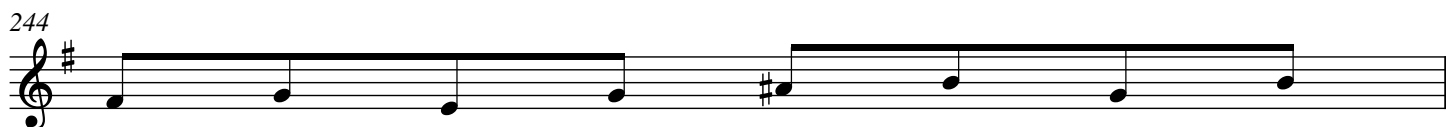
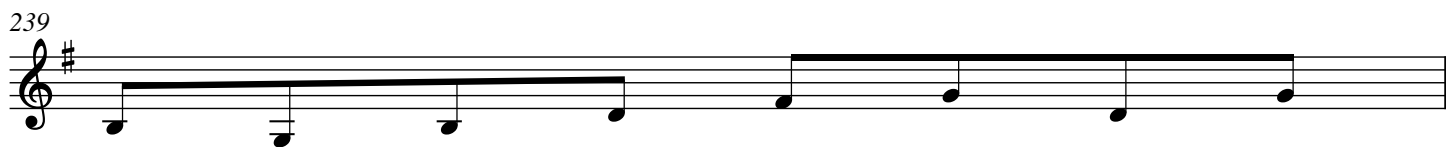
109

113

114



198



303 5 5 5 5

305 $\text{♩} = 66$
tr

306 *tr tr tr tr tr tr tr tr*

313 *tr tr tr tr tr*

317 *tr tr* $\text{♩} = 40$ 6 6

322 6 6 6 6

323 6 6 3 3 3 3 3 3 3 3 3 3

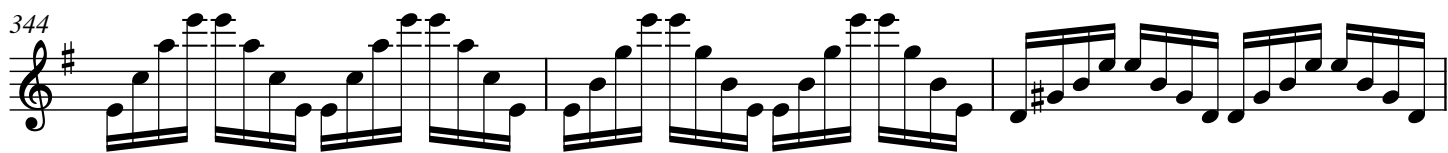
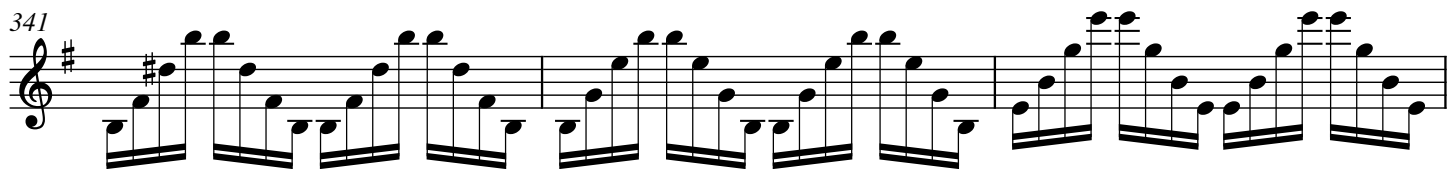
326 3 3 3 3 3 3 3 3 3 3 3 3

329 3 3 3 3 $\text{♩} = 70$ $\text{♩} = 80$

332 $\text{♩} = 90$ $\text{♩} = 100$

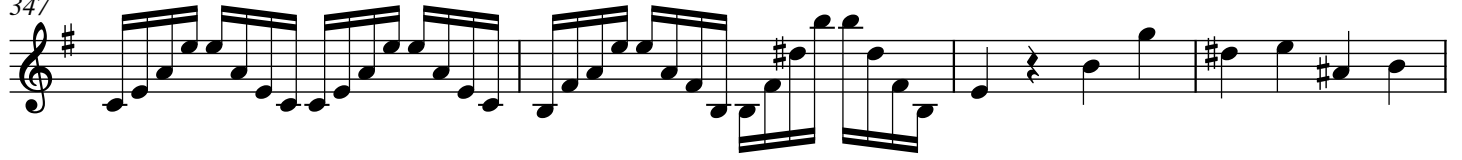
335

338



12

347



351



357



414

419

423

427

431

435

439

478

485

487

493

494

498

500

505

506

511

513



520

