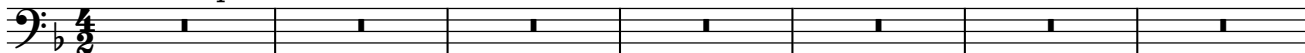
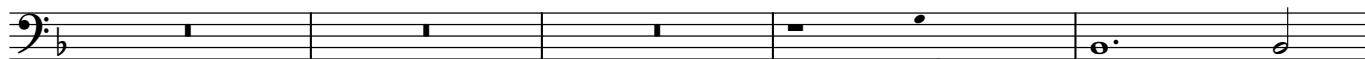


Prima pars

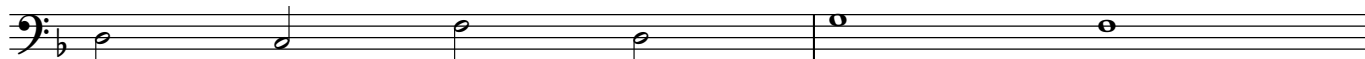


8



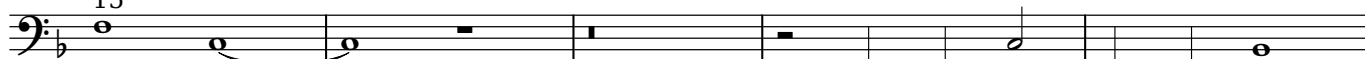
In de - di -

13



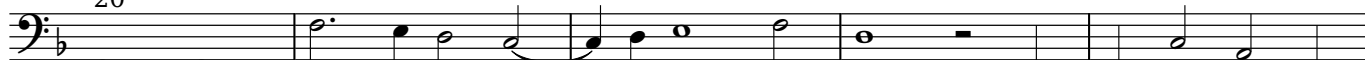
-ca - ti - o - ne tem - pli,

15



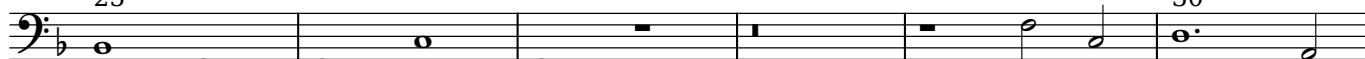
tem - pli, in de - di - ca - ti - o -

20



-ne tem - pli, in de - di - ca - ti -

25



o - ne tem - pli de - can - ta - bat

31



po - pu - lus lau - dem, de -

36



-can - ta - bat po - pu - lus lau - dem, et in

41



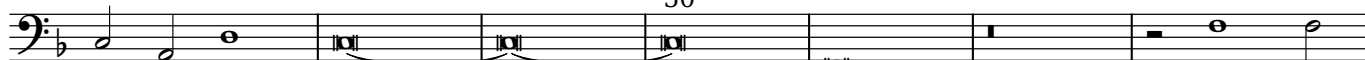
o - re e - o rum,

46



et in o -

47



-re e - o rum dul - cis

2

54

55

re - so - na - bat so - nus, re - so - na - bat so -

Detailed description: This block contains the first musical staff. It starts with a bass clef and a key signature of one flat (B-flat). The staff contains two measures. Measure 54 has four quarter notes: G2, A2, B2, and C3. Measure 55 has a whole note G2, followed by a whole rest, then a quarter note G2, a quarter note A2, a quarter note B2, and a quarter note C3. The lyrics 're - so - na - bat so - nus, re - so - na - bat so -' are written below the notes.

59

60

-- nus, al - le - lu - ia,

Detailed description: This block contains the second musical staff. It starts with a bass clef and a key signature of one flat. The staff contains two measures. Measure 59 has a whole rest, followed by a quarter note G2, a quarter note A2, a quarter note B2, and a quarter note C3. Measure 60 has a quarter note G2, a quarter note A2, a quarter note B2, a quarter note C3, a quarter note G2, a quarter note A2, a quarter note B2, a quarter note C3, a whole note G2, and a whole rest. The lyrics '-- nus, al - le - lu - ia,' are written below the notes.

64

65

al - le - lu - ia, al - le -

Detailed description: This block contains the third musical staff. It starts with a bass clef and a key signature of one flat. The staff contains two measures. Measure 64 has a whole rest, a quarter note G2, a quarter note A2, a quarter note B2, and a quarter note C3. Measure 65 has a whole note G2, a whole rest, a quarter note G2, a quarter note A2, a quarter note B2, and a quarter note C3. The lyrics 'al - le - lu - ia, al - le -' are written below the notes.



4

125

125

me - a do - mus o - ra - ti - o - nis vo -

130

130

-ca - bi - tur, do - mus o - ra - ti - o - nis vo - ca - bi -

135

135

-tur, do - mus o - ra - ti - o - nis vo - ca - bi - tur,

140 140 143

do - mus o - ra - ti - o - nis vo - ca - bi - tur.

146 146 149

Al - le - - - - - lu - ia,

152 152 155

al - le - - - - - lu - ia, al -

157 160

-le - lu - ia, al - le - lu - ia, al - le - lu - ia.