

Heinrich Finck

Christ ist er - stan - - den von der

6

Detailed description: This system contains the first seven measures of the piece. It features five staves. The vocal line (fourth staff) begins with a treble clef, a key signature of one flat (B-flat), and a 2/2 time signature. The lyrics 'Christ ist er - stan - - den von der' are written below the notes. A measure rest of 6 is indicated above the sixth measure.

8

Mar - - - ter

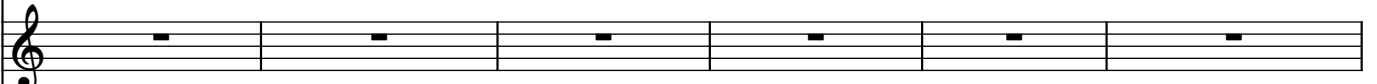
Detailed description: This system contains measures 8 and 9. It features five staves. The vocal line (fourth staff) continues with the lyrics 'Mar - - - ter'. The music is in the same key signature and time signature as the first system.

9

al - len, des sol - len wir al - le froh sein,

10

Detailed description: This system contains measures 10 and 11. It features five staves. The vocal line (fourth staff) continues with the lyrics 'al - len, des sol - len wir al - le froh sein,'. A measure rest of 10 is indicated above the first measure of this system.



15 20

Christ soll un - ser, soll un - ser Trost sein, Ky - ri e

A musical staff in treble clef with a key signature of one flat (B-flat) and a common time signature (C). It contains six measures of music. The first measure is a whole rest. The second measure contains a quarter note G4. The third measure contains a quarter note A4. The fourth measure contains a quarter note Bb4. The fifth measure contains a quarter note C5. The sixth measure contains a quarter note Bb4. The lyrics are: "Christ soll un - ser, soll un - ser Trost sein, Ky - ri e".

21

21

25

e lei son, e - lei - son.

27

27

30

Christ ist er - stan den von der Mar - ter al

34

34

35

40

len, des sol - len wir all froh sein, froh sein, Christ

4

41

soll un - ser Trost sein, Ky - ri lei son,

48

Ky - ri - e - leis, des solln wir al - le froh sein,

56

<http://icking-music-archive.org> Christ soll un ser Trost sein, Ky - ri - e - lei - son.