

Violin

# Andante, Op. 34 No. 2

for Violin (or cello) and Piano

Josef Stransky

**Andante**  
piano

Musical notation for measures 1-7 of the violin part. The music is in 3/4 time with a key signature of one flat (B-flat). It begins with a piano dynamic. The first measure contains a whole note chord. The second measure has a half note followed by a quarter note. The third measure has a quarter note followed by a quarter rest. The fourth measure has a quarter note followed by a quarter rest. The fifth measure has a half note. The sixth measure has a half note. The seventh measure has a half note with an accent.

8

Musical notation for measure 8 of the violin part. It consists of a single whole note chord with a long, sweeping slur over it.

9

Musical notation for measures 9-15 of the violin part. The music features a series of eighth and sixteenth notes with various articulations, including slurs and accents. The key signature remains one flat.



25



A single staff of music in G major (one sharp). The piece begins at measure 32 with a treble clef and a key signature of one sharp (F#). The notation consists of the following measures:

- Measure 32: A quarter note G4, followed by a dotted quarter note G4 with an accent (>).
- Measure 33: A quarter note A4, followed by a quarter note B4, and a quarter note A4.
- Measure 34: A quarter note G4, followed by a quarter note F#4, and a quarter note G4.
- Measure 35: A quarter note G4, followed by a quarter note A4, and a quarter note B4.
- Measure 36: A quarter note A4, followed by a quarter note G4, and a quarter note F#4.
- Measure 37: A quarter note G4, followed by a quarter note A4, and a quarter note B4.
- Measure 38: A quarter note A4, followed by a quarter note G4, and a quarter note F#4.
- Measure 39: A quarter note G4, followed by a quarter note A4, and a quarter note B4.

The piece concludes with a final quarter note G4. Various musical markings are present, including slurs, accents (>), and breath marks (v) above the notes in measures 32, 35, 37, and 39.

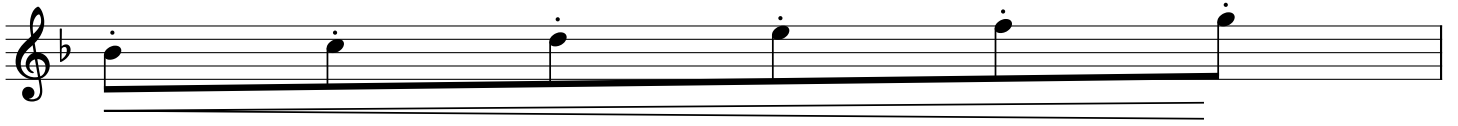
40

Musical notation on a staff with a treble clef and a key signature of one flat. The notation consists of a dotted quarter note on the second line, followed by a half note on the second line. A thick black horizontal bar is drawn above the half note. A slur is drawn below the half note. Below the staff, there are two parallel horizontal lines.

41



48





57

