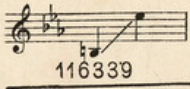


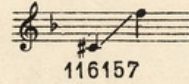
DEC 16 1916

© G. E. 393314

No. 1 in C minor



No. 2 in D minor



DEDICATED TO AND SUNG BY MR. HERBERT WITHERSPOON

ETHIOPIA SALUTING THE COLORS

SONG

The Poem by

WALT WHITMAN

The Music by

H. T. BURLEIGH

Price 75 cents

COPYRIGHT MCMXV
BY G. RICORDI & CO., INC.
116157.

An orchestral accompaniment can be had on hire from the publishers

G. RICORDI & Co.,
14 EAST 43RD STREET
NEW YORK

AND AT
LONDON, PARIS, LEIPZIG,
ROME, PALERMO, NAPLES,
BUENOS-AYRES AND MILAN.

M1621

.B

Dedicated to and Sung by Mr. Herbert Witherspoon

3

Ethiopia Saluting the Colors

Words by
WALT WHITMAN

Music by
H. T. BURLEIGH

Tempo di marcia (♩ = 116)

Piano

mf *ritenuto* *rit.* *tempo I*

mf

"Who are you, dusk-y wom-an, so an-cient, hard-ly hu-man, With your

ritenuto *rall.*

wool - ly white and tur-band head, and bare bo - ny feet?

Copyright MCMXV by G. Ricordi & Co., Inc.

116339-8

All rights of execution, reproduction, translation and transcription are strictly reserved

tempo I^o *poco rit.*

Why ris - ing by the road - side here, Do you the col - ors

tempo I^o *poco rit.*

dim. e rit. *p*

greet?" "Who are you, dusk - y

f tempo *p dim. e rit.*

Più mosso

wom - an?" ('Tis while our ar - my lines Ca - ro - li - na's sands and pines,

Più mosso *mf*

cresc.

Forth from thy hov - el door — thou Eth - i - o - pia com'st to me,

cresc.

f

As un - der dough - ty Sher - man I march tow'rd the sea.)

mf

fz

p languido

"Me, mas - ter, years a hun - dred since,

Andante

dim. e rit.

p

from my par - ents sun - der'd,

p

rit. *meno mosso*
p

sun - der'd, A lit - tle child — they caught me as the sav - age

Moderato

beast is — caught; Then

hith - er 'cross the sea — The cru - el slav - er brought

Moderato

me

f Tempo I? *mf* rall.

“Me a lit-tle child the cru-el slav - er brought”

p colla voce *rit. e dim.*

f tempo *rit. e dim.* *pp* Tempo I?

No

f *p* *mf*

fur-ther does she say — but lin-ger-ing all the day — Her

marcato

high - borne tur-ban'd head she wags, — and rolls - her dark - ling eye,

ritenuto *rall.*

ritenuto *rall.*

And court'sies to the reg - i - ments the gui - dons mov - ing

a tempo *cresc. - e - rit.*

a tempo *cresc. - e - rit.*

by,

f *Tempo I*

Quasi Recit.

“What is it, fate-ful

animandosi -

wom-an, so blear hard-ly hu-man? Why wag— your

rit.

head with tur-ban bound, yel-low, red and

p *Moderato Sentito* *mf*

green?— Are the things so strange— and mar-vel-ous

p *p* *mf* *p*

you see, or have seen, or

rit. *p*

have— seen?"

rit. e dim. *pp* *a tempo* *ppp* *perden.*

The Grey Wolf

Words by
ARTHUR SYMONS
(By Special permission)

Music by
H. T. BURLEIGH

Moderato Quasi recit. *f*

Voice The

Piano *f*

sva.....

grey wolf comes a - gain! *p* I had made

fast the door with chains: how has the grey wolf pass'd my

Most respectfully dedicated to Signorina Lucrezia Bori

Just You

Words by
MADGE MARIE MILLER

Music by
H. T. BURLEIGH

Andante cantabile

Voice

Piano

p

espressivo

p

What are my

thoughts to-night? They're of you Where is my heart to-night?

mf

poco rit.

Gone with you Where is my hope to-night? It's_ in you

mf

poco rit.