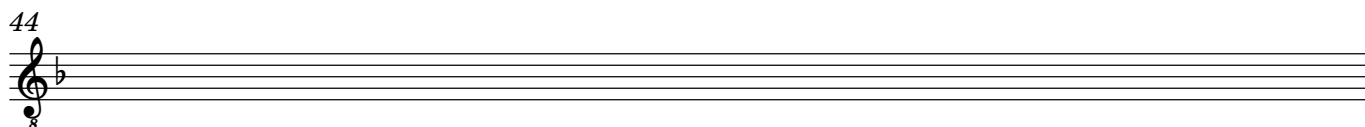
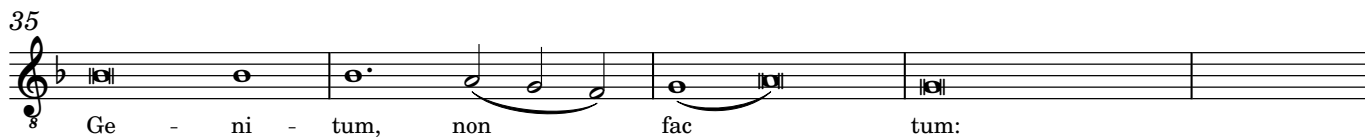
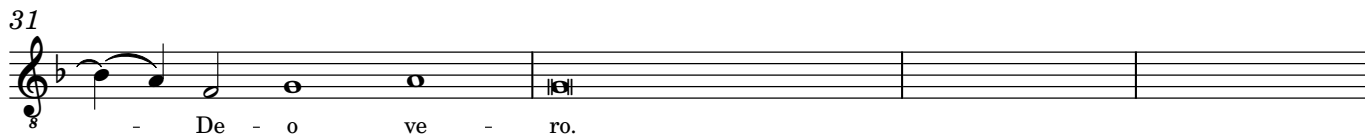
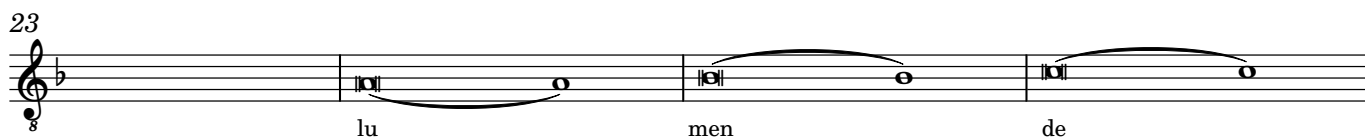
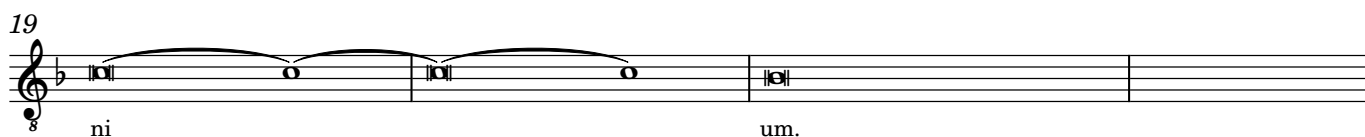
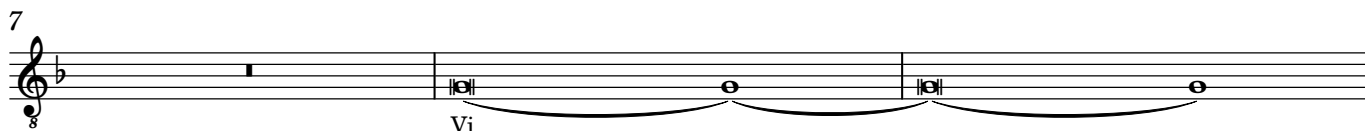
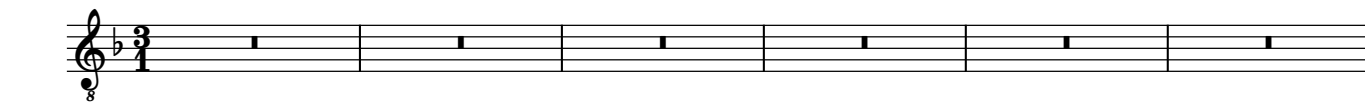


#

Josquin des Prés "Missa da pacem"



2

48

8 -cen - - dit de coe - -

49

8 -lis, des - cen - dit de coe - lis, des - cen - dit de

52

8 coe lis.

54

8 *p* Et in - car - na - tus est de Spi -

60

8 -ri - - tu Sanc - - -

62

 -to ex Ma - ri - a Vir - gi

69

70

 ne: Et ho - mo fac tus

77

 est.

78

86

92
mf

99

 Et re - su -
 -rex - it ter - ti - a di

103

 e, se -

104

 -cun - dum Scrip tu - ras. Et as - cen - dit in coe

109

110

 lum: se -

111

 -det ad dex - te - ram, se - det ad dex - te - ram Pa

4

115

Musical staff for measure 115, featuring a treble clef, a key signature of one flat (B-flat), and a common time signature (C). The staff contains a melodic line with a long slur over the first six notes. The notes are: G4 (quarter), A4 (quarter), Bb4 (quarter), C5 (quarter), Bb4 (quarter), A4 (quarter), G4 (half). The staff ends with a double bar line and repeat dots. The word "tris." is written below the staff.

tris.

118

Musical staff for measure 118, featuring a treble clef, a key signature of one flat (B-flat), and a common time signature (C). The staff contains a melodic line with a long slur over the first six notes. The notes are: G4 (quarter), A4 (quarter), Bb4 (quarter), C5 (quarter), Bb4 (quarter), A4 (quarter), G4 (half). The staff ends with a double bar line and repeat dots. The word "Et" is written below the staff, followed by a dynamic marking *f*.

f

Et

i

te

124

Musical staff for measure 124, featuring a treble clef, a key signature of one flat (B-flat), and a common time signature (C). The staff contains a melodic line with a long slur over the first three notes. The notes are: G4 (quarter), A4 (quarter), Bb4 (half). The staff ends with a double bar line and repeat dots. The word "rum." is written below the staff.

rum.

131

Musical staff for measure 131, featuring a treble clef, a key signature of one flat (B-flat), and a common time signature (C). The staff contains a melodic line with a long slur over the last four notes. The notes are: G4 (quarter), A4 (quarter), Bb4 (quarter), C5 (quarter), Bb4 (quarter), A4 (quarter), G4 (half). The staff ends with a double bar line and repeat dots. The words "Et in Spi - - ri" are written below the staff.

Et

in

Spi

- - ri

136

Musical staff for measure 136, featuring a treble clef, a key signature of one flat (B-flat), and a common time signature (C). The staff contains a melodic line with slurs over the first three notes and the last three notes. The notes are: G4 (quarter), A4 (quarter), Bb4 (half), G4 (quarter), A4 (quarter), Bb4 (half), C5 (quarter), Bb4 (quarter), A4 (quarter), G4 (half). The staff ends with a double bar line and repeat dots. The words "tum Sanc - tum, Do - mi - num, et vi - vi fi - can - tem:" are written below the staff.

tum

Sanc - tum,

Do - mi - num,

et

vi - vi

fi - can - tem:

141

Musical staff for measure 141, featuring a treble clef, a key signature of one flat (B-flat), and a common time signature (C). The staff contains a single note: G4 (half). The staff ends with a double bar line and repeat dots.

142

Musical staff for measure 142, featuring a treble clef, a key signature of one flat (B-flat), and a common time signature (C). The staff contains a melodic line with a slur over the last three notes. The notes are: G4 (quarter), A4 (quarter), Bb4 (half), G4 (quarter), A4 (quarter), Bb4 (half), C5 (quarter), Bb4 (quarter), A4 (quarter), G4 (half). The staff ends with a double bar line and repeat dots. The words "Qui cum Pa - tre et Fi - li - o," are written below the staff.

Qui

cum

Pa - tre

et

Fi - li - o,

148

Musical staff for measure 148, featuring a treble clef, a key signature of one flat (B-flat), and a common time signature (C). The staff contains a melodic line with slurs over the last two notes and the last three notes. The notes are: G4 (quarter), A4 (quarter), Bb4 (half), G4 (quarter), A4 (quarter), Bb4 (half), C5 (quarter), Bb4 (quarter), A4 (quarter), G4 (half). The staff ends with a double bar line and repeat dots. The words "et con - glo - ri - fi - ca tur." are written below the staff.

et

con - glo - ri - fi - ca

tur.

155

Musical staff for measure 155, featuring a treble clef, a key signature of one flat (B-flat), and a common time signature (C). The staff contains three whole notes: G4, A4, and Bb4. The staff ends with a double bar line and repeat dots.

158

Et u - nam sanc tam

165

Ec cle si - -

168

-am. Con - fi - te - or u - num

172

bap - - tis - - ma.

174

in re - mis - si - o - -

180

-nem pec ca to

184

rum. Et ex - spec to

188

re - sur - rec - ti - o - nem mor tu - o

192

rum.

193

Et vi - tam ven - tu - ri, ven tu

197

ri sae cu li. A

201

men.