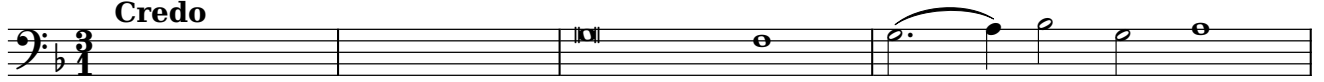


#

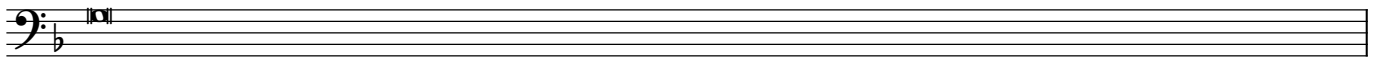
Josquin des Prés "Missa da pacem"

Credo



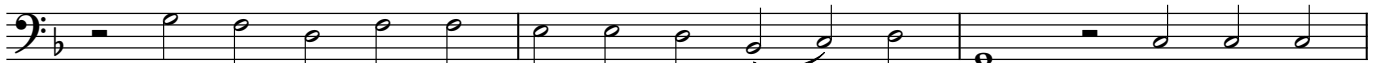
Pa - trem om - ni - po - ten -

5



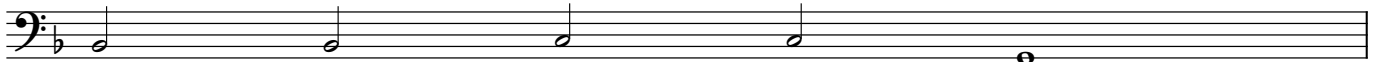
-tem,

6



fac - to - rem coe - li et ter - rae, et ter - rae, vi - si - bi -

9



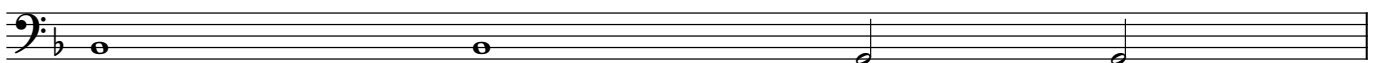
-li - - um om - - ni - - um,

10



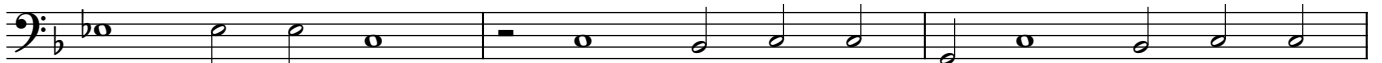
et in - vi - si - bi li - um. Et in u

13



num Do - - mi - - num

14



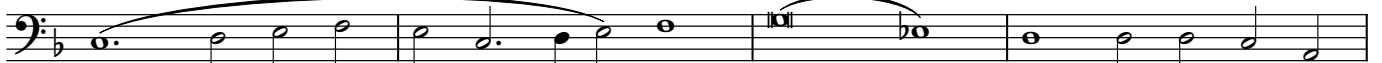
Je - sum Chri - stum, Fi - li - um De - i u - ni - ge - ni -

17



-tum. Et ex

19



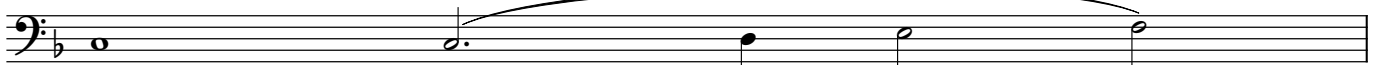
Pa tre na tum an - te om - ni -

23



-a sae cu - la, sae cu - la. De - um de De -

26



-o, lu

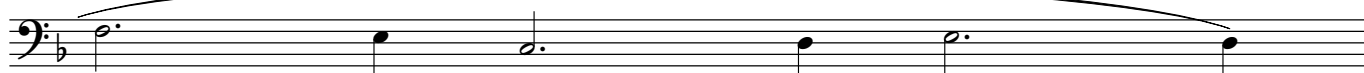
27



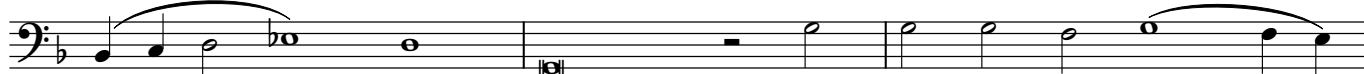
men de lu

2

30



31



mi - ne, De - um ve - rum de

34



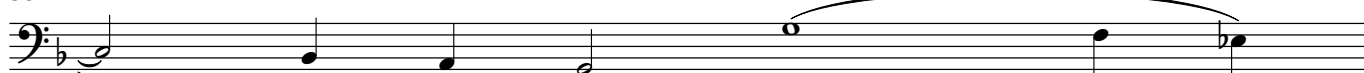
De - - o ve - -

35



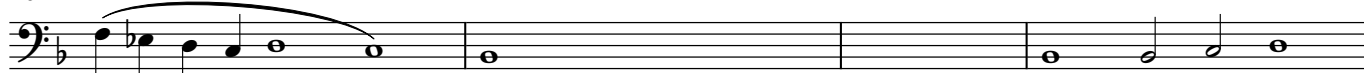
-ro. Con - sub - satn - ti - a

39



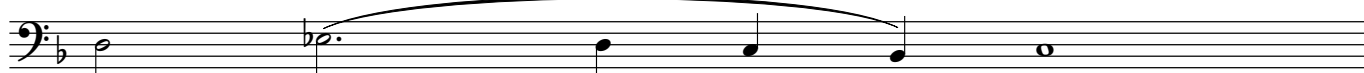
lem Pa

40



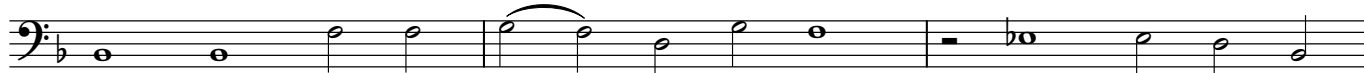
tri: per quem om - ni -

44



- a fac ta

45



sunt. Qui prop - ter nos ho - mi - nes, et prop - ter no -

48



-stram sa - - lu

49



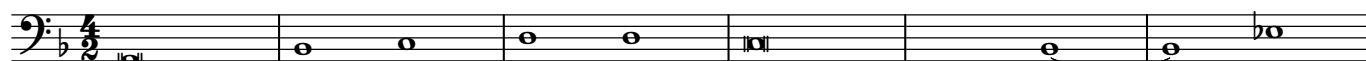
tem des - cen - dit de coe lis, des - cen -

52

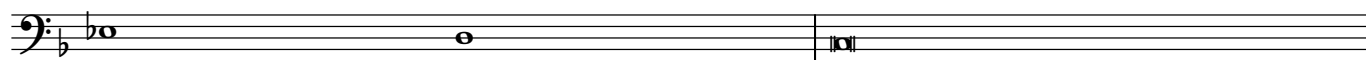


-dit de coe lis.

54



60 *p* Et in - car - na - tus est de Spi -



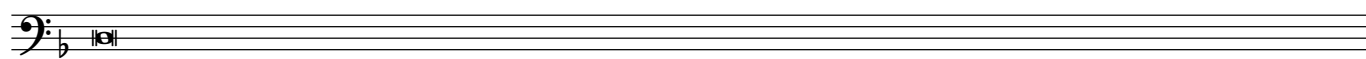
- ri - - - tu - - - Sanc - - -

62



- to ex Ma - ri - a Vir gi

69



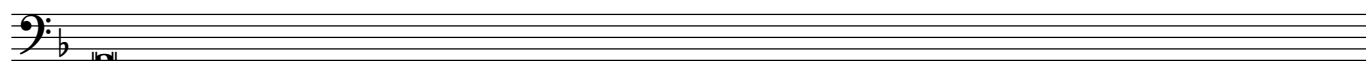
ne\_ - - - - -

70



- - - Et ho - mo fac tus

77



est.

78



*mf* Cru - ci fix - us e - ti - am pro no bis: sub

83



Pon - - ti - - o

84



85



Pi la

89

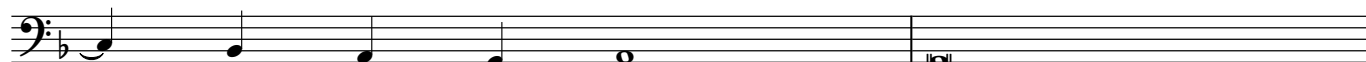


91



to pas sus, et se pul

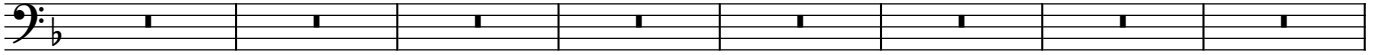
96



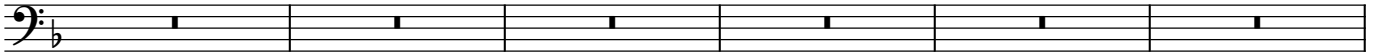
tus est.

4

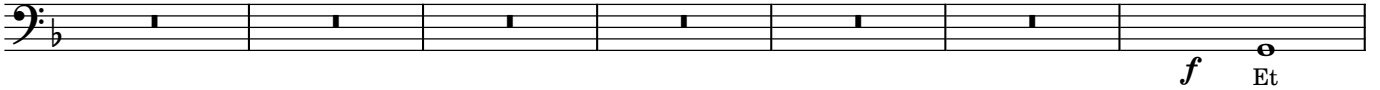
98



106

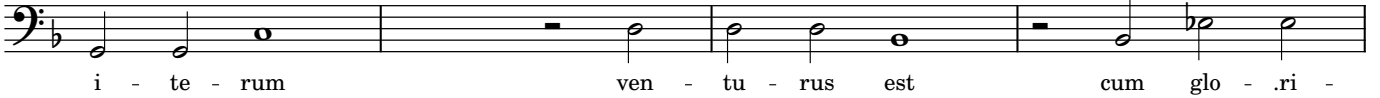


112



*f* Et

119



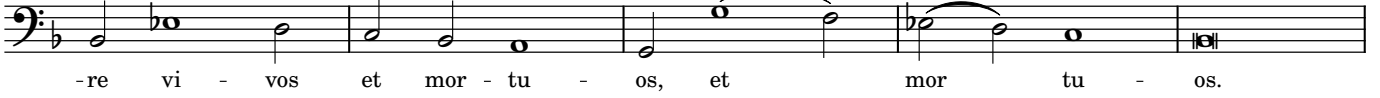
i - te - rum ven - tu - rus est cum glo - ri -

123



- a, ju - di - ca -

124



- re vi - vos et mor - tu - os, et mor tu - os.

129



Et in Spi - ri - tum Sanc - tum, Do - mi - num,

135



et vi - vi -

136



- fi - can - tem, et vi - vi - fi - can tem: qui

141



ex Pa - tre



6

194

vi - tam ven - tu - ri, ven tu ri

This musical staff shows measures 194 through 197. It begins with a bass clef and a key signature of one flat. The melody consists of quarter notes: G2, F2, E2, D2, C2, B1, A1, G1. There are slurs over the notes G2-F2-E2-D2-C2, B1-A1-G1, and F2-E2-D2-C2. The lyrics are: vi - tam ven - tu - ri, ven tu ri.

198

sae cu li. A

This musical staff shows measures 198 through 201. It begins with a bass clef and a key signature of one flat. The melody consists of quarter notes: G2, F2, E2, D2, C2, B1, A1, G1. There are slurs over the notes G2-F2-E2-D2-C2, B1-A1-G1, and F2-E2-D2-C2. The lyrics are: sae cu li. A.

202

men.

This musical staff shows measure 202. It begins with a bass clef and a key signature of one flat. The melody consists of a quarter note G2. There is a slur over the note G2. The lyrics are: men.