

#

Josquin des Prés "Missa da pacem"

Sanc

6

7

tus,

12

Sanc tus,

16

Sanc

17

tus Do - mi - nus De - us

21

Sa ba - oth, Do -

23

-mi - nus De - us Sa ba - oth, Do - mi -

27

-nus De - - us Sa ba_ -

28

- - oth, Do mi - nus De - us Sa

31

ba oth.

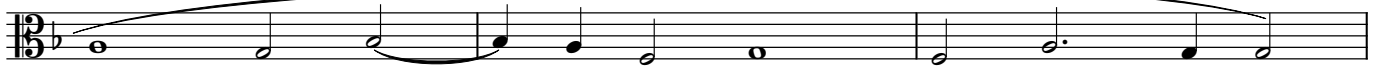
34

Ple - ni sunt coe

Detailed description: This is a page of a musical score for Josquin des Prés' 'Missa da pacem'. It features a single vocal line in mensural notation on a five-line staff. The key signature has one flat (B-flat), and the time signature is 3/4. The score is divided into measures, with measure numbers 6, 7, 12, 16, 17, 21, 23, 27, 28, 31, and 34 indicated at the beginning of their respective lines. The lyrics are written below the notes, with hyphens indicating syllables that span across multiple notes. The text includes 'Sanc', 'tus,', 'Do - mi - nus De - us', 'Sa ba - oth, Do -', '-mi - nus De - us Sa ba - oth, Do - mi -', '-nus De - - us Sa ba_ -', '- - oth, Do mi - nus De - us Sa', 'ba oth.', and 'Ple - ni sunt coe'. The notation includes various note values (minims, crotchets, quavers), rests, and long horizontal lines representing sustained notes or breath marks. The score concludes with a double bar line and a change in time signature to 4/2.

2

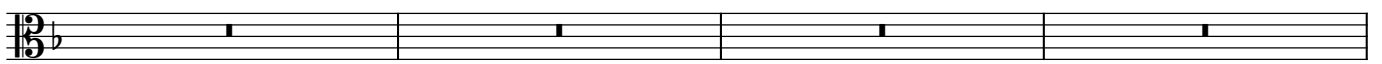
39



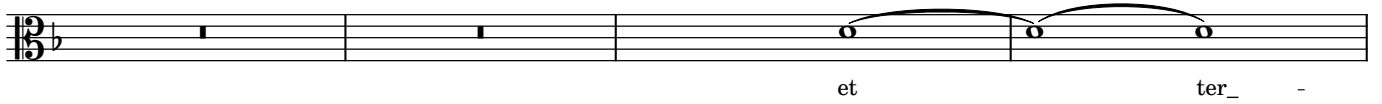
42



48



52



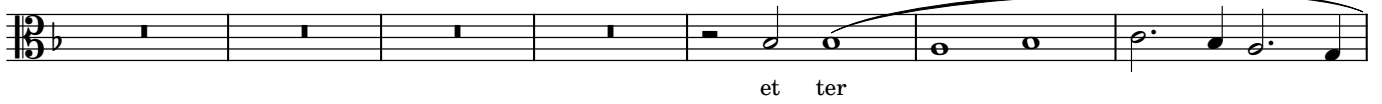
56



61



63



70



73



78

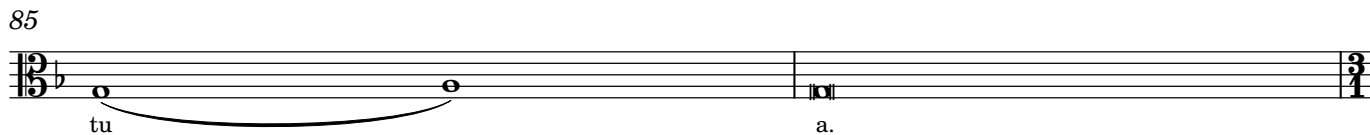


80



tu a, glo ri - a

85



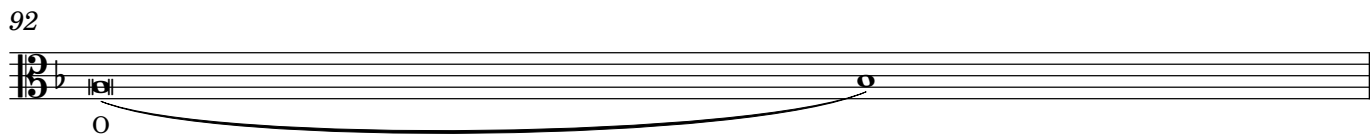
tu a.

87



O san na,

92



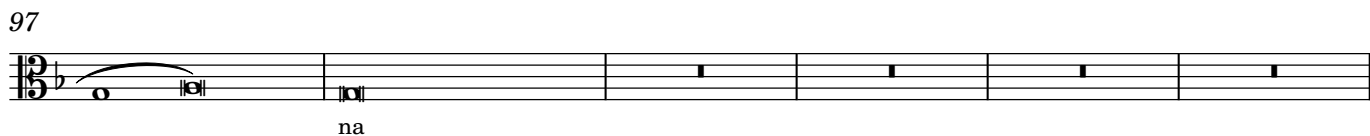
O

93



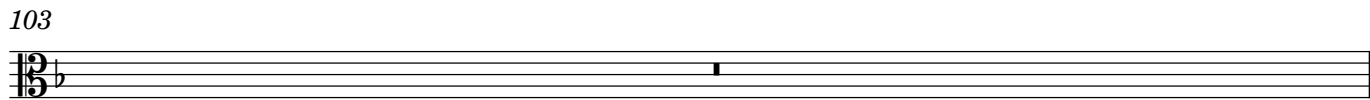
na,

97



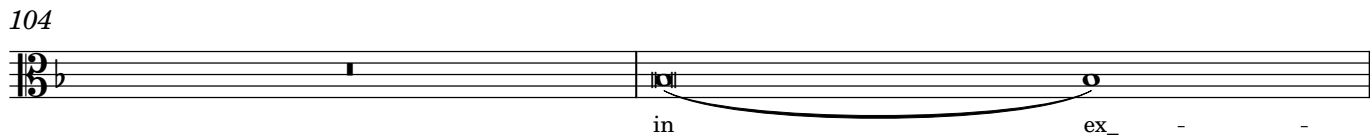
na

103



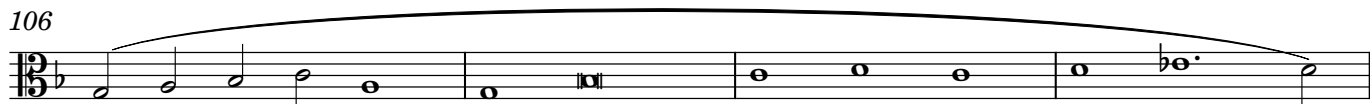
in

104



ex_ - -

106



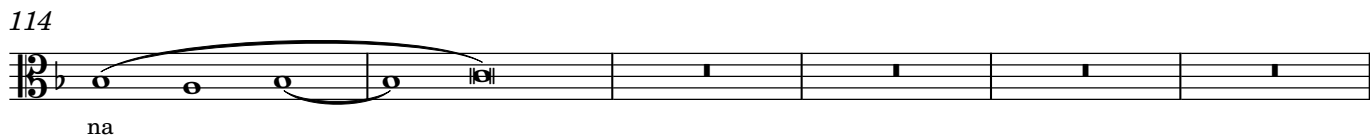
-cel

110



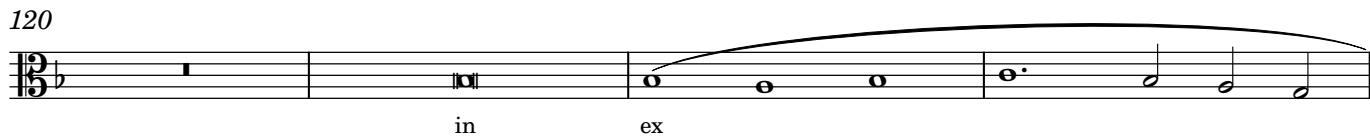
sis, O - san

114



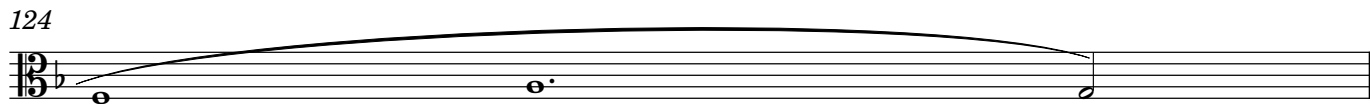
na

120



in ex

124



-cel

4

125

Musical notation for measure 125, featuring a treble clef, a key signature of one flat (B-flat), and a 3/4 time signature. The melody consists of four measures. The first measure contains a half note G4 (labeled 'cel') and a quarter note A4 (labeled '#'). The second measure contains a half note Bb4 (labeled 'sis,'). The third measure contains a half note C5 (labeled 'O') and a quarter note D5 (labeled 'san'). The fourth measure contains a half note E5 (labeled 'san') and a quarter note F5 (labeled 'san'). A slur covers the notes from the first measure to the end of the fourth measure.

129

Musical notation for measure 129, featuring a treble clef, a key signature of one flat (B-flat), and a 3/4 time signature. The melody consists of a single measure with a half note G4 and a quarter note A4. A slur covers the entire measure.

130

Musical notation for measure 130, featuring a treble clef, a key signature of one flat (B-flat), and a 3/4 time signature. The melody consists of four measures. The first measure contains a half note G4 (labeled '-') and a quarter note A4 (labeled 'na'). The second measure contains a half note Bb4 (labeled 'in'). The third measure contains a half note C5 (labeled 'ex') and a quarter note D5 (labeled 'cel'). The fourth measure contains a half note E5 (labeled 'cel') and a quarter note F5 (labeled 'cel'). Slurs are placed over the first two measures and the last two measures.

134

Musical notation for measure 134, featuring a treble clef, a key signature of one flat (B-flat), and a 3/4 time signature. The melody consists of four measures. The first measure contains a half note G4 (labeled 'sis,') and a quarter note A4. The second measure contains a half note Bb4 (labeled 'in'). The third measure contains a half note C5 (labeled 'ex') and a quarter note D5. The fourth measure contains a half note E5 (labeled 'cel') and a quarter note F5 (labeled 'sis,'). Slurs are placed over the first two measures and the last two measures.

138

Musical notation for measure 138, featuring a treble clef, a key signature of one flat (B-flat), and a 3/4 time signature. The melody consists of four measures. The first measure contains a half note G4 (labeled '-') and a quarter note A4 (labeled 'ex'). The second measure contains a half note Bb4 (labeled 'cel'). The third measure contains a half note C5 (labeled 'sis,') and a quarter note D5 (labeled 'in'). The fourth measure contains a half note E5 (labeled 'ex') and a quarter note F5. A slur covers the notes from the second measure to the end of the fourth measure.

142

Musical notation for measure 142, featuring a treble clef, a key signature of one flat (B-flat), and a 3/4 time signature. The melody consists of four measures. The first measure contains a half note G4 (labeled 'cel') and a quarter note A4. The second measure contains a half note Bb4 (labeled 'sis,'). The third measure contains a half note C5 (labeled 'in') and a quarter note D5. The fourth measure contains a half note E5 (labeled 'ex') and a quarter note F5 (labeled 'cel'). A slur covers the notes from the first measure to the end of the fourth measure.